

Service and Repair





Introduction

Westwind Air Bearings is the leading manufacturer of air bearing spindles, which are used in the PCB drilling industry worldwide. Air bearing spindles are precision engineered components, which require careful maintenance and servicing to guarantee the best performance throughout their long life. Your choice of service partner is important to ensure the best performance from your Westwind spindles.

Choose Westwind for :-

- Worldwide service network
- Genuine parts from the original manufacturer
- Testing to original specification
- Engineers trained on Westwind products
- Highly experienced support

Westwind has a unique knowledge of the PCB drilling industry and applications gained over 30 years of providing customised spindle designs to meet OEM requirements.

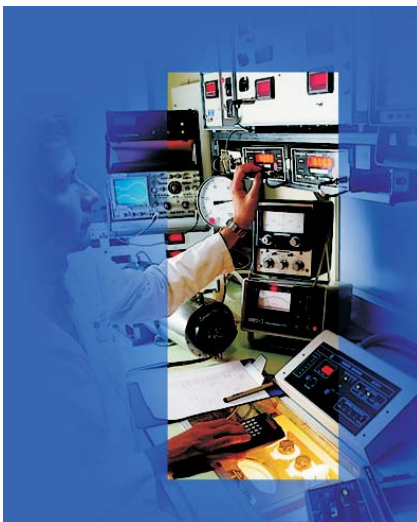
GLOBAL REACH - LOCAL SUPPORT



Westwind's worldwide service network ensures that any spindle repair work or routine servicing is carried out promptly and efficiently.

Authorised Service Centres

Westwind Air Bearings has demanding standards for spindle repair and maintenance. Spindle repair companies which meet these standards are given Authorised Service Centre status. Their engineers are Westwind trained and they use Westwind approved test equipment and procedures. Every repaired spindle must pass a 10-point test (see box) to the same specification as at original manufacture. Westwind carry out regular audits, to ensure that standards are maintained, and of course only genuine Westwind parts are used.



10 point test

- Air flow
- Water flow
- End float / lift off
- Axial load (inner)
- Axial load (outer)
- Collet torque
- Taper runout
- Dynamic runout
- Motor check
- Vibration

An up to date list of Authorised Service Centres is always available at our website www.westwind-airbearings.com.

Genuine Parts

The performance of Westwind spindles can only be maintained if genuine Westwind parts are used during service and repair. The use of non-Westwind components results in unacceptable performance, and likely premature failure of the spindle.

Westwind authorised service centres use only genuine Westwind parts.



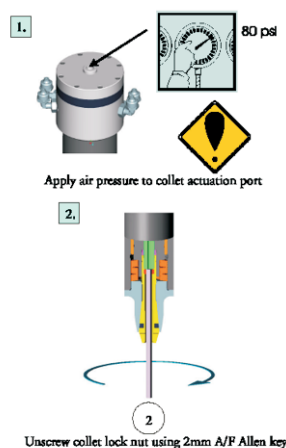
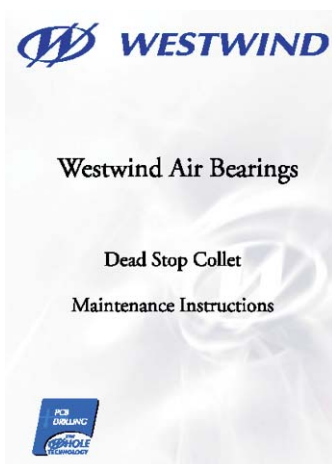
Collet kits

Collet maintenance kits are available for the main collet types. These consist of a collet locking tool, specially designed to enable the collet to be set correctly, and a suitable lubricant. Torque test kits are also available, which contain full equipment and instructions for checking the torque of a collet.



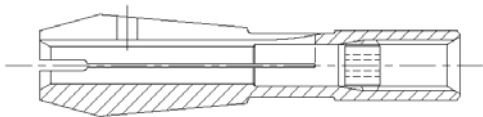
Available literature

Collet maintenance instructions are available for both dead stop and positive lock type collets. These can be downloaded from our website www.westwind-airbearings.com. Different language versions are being added as they become available.

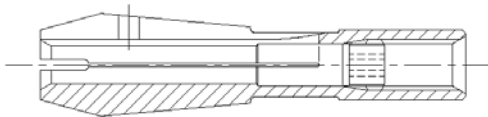


Collet list / correct kit part number

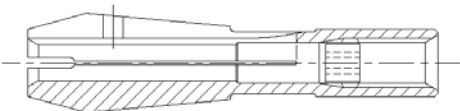
Westwind manufacture and supply spare collets, which are precision matched to the spindles in our PCB range. Using genuine Westwind collets in your spindles will enhance their performance and extend their working life.



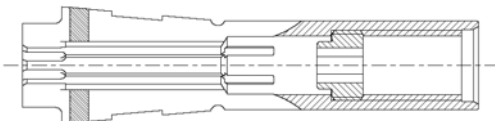
Collet : 17593
Type : 1/8" Positive lock
Used on : **D1201-02,06,20,21,33;**
D1263-03,04,06,07,09;
D1331-01,02,03,07,08,09,10,13,
17,19,20,21,24,27,28,38;
D1404-01;
D1502-01;
D1531-06,09;
D1686-01,02,03,04
Collet kit : 44475 (4 jaw positive lock)



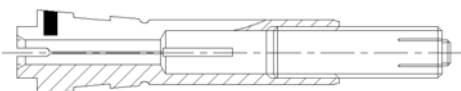
Collet : 17809
Type : 1/8" Positive lock
Used on : **D1199-03,04,05;**
D1473-01,05
Collet kit : 44475 (4 jaw positive lock)



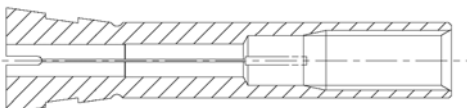
Collet : 17809/2
Type : 1/8" Positive lock
Used on : **D1199-03,04,05;**
D1473-01,05
Collet kit : 44475 (4 jaw positive lock)



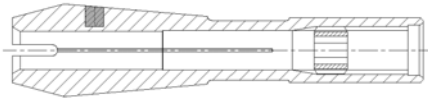
Collet : 17508
Type : 1/8" Positive lock
Used on : **D1251-03**
Collet kit : 44429 (6 jaw positive lock)



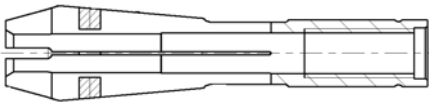
Collet : 16194
Type : 1/8" Positive lock
Used on : **M320-38,43,55**
Collet kit : 44429 (6 jaw positive lock)



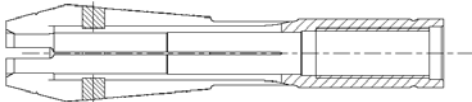
Collet : 34381
Type : 1/8" Positive lock
Used on : **D1331-26,29,31**
Collet kit : 44429 (6 jaw positive lock)



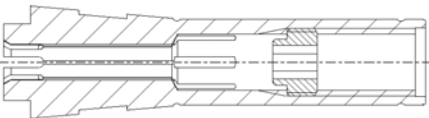
Collet : 37462
Type : 1/8" Dead stop
Used on : **D1331-30,32,41,42,44;**
D1531-08
Collet kit : 44428 (4 jaw dead stop)



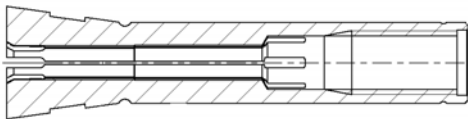
Collet : 40374
Type : 1/8" Dead stop
Used on : **D1686-10,11,12,15**
Collet kit : 44428 (4 jaw dead stop)



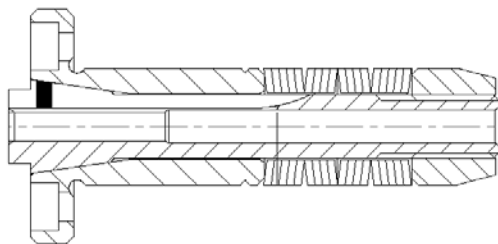
Collet : 41844
Type : 1/8" Dead stop
Used on : **D1199-06,10;**
D1473-07
Collet kit : 44428 (4 jaw dead stop)



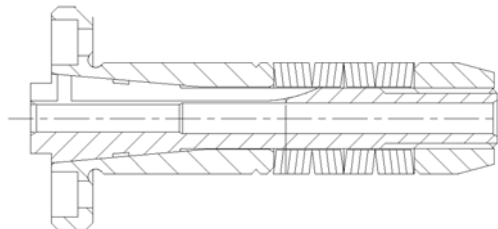
Collet : 16703
Type : 1/8" Dead stop
Used on : **D1170-04;**
D1303-01,02;
D1524-01,02,03,04,05;
M320-46,50,62, 63,64,65,66
Collet kit : 44430 (6 jaw dead stop)



Collet : 38730
Type : 1/8" Dead stop
Used on : **D1331-36**
Collet kit : 44430 (6 jaw dead stop)



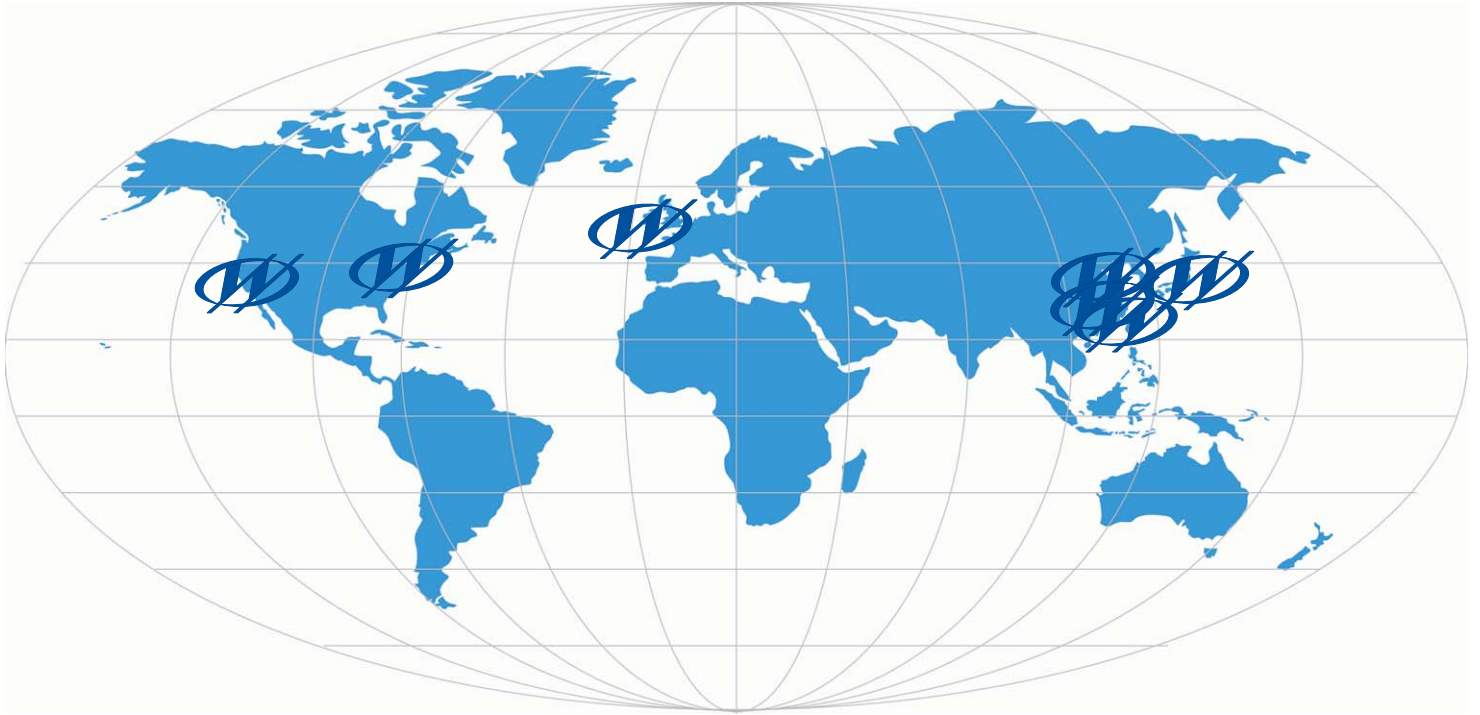
Collet : 11257
Type : 1/8" Cartridge
Used on : **D1519-01;**
M320-01,03,05,07,10,11,16,17,
18,19,20,22,23,27,28,29,30,36,
47,52
Collet kit : Not applicable



Collet : 08085A1
Type : 1/8" Cartridge
Used on : **M320-24**
Collet kit : Not applicable

If you do not find the item you require in this list, please contact your nearest Westwind Air Bearings office or Authorised Service Centre.

Torque test kits are available, please contact your nearest Westwind Air Bearings office or Authorised Service Centre for details.



For further information, contact:

Westwind Air Bearings
Holton Road
Holton Heath
Poole
Dorset BH16 6LN
UK
Tel: +44 (0)1202 627200
Fax: +44 (0)1202 627208
info@westwind-airbearings.com
www.westwind-airbearings.com

Westwind Air Bearings
Building 8, GangTian Ind. Sq.
GangTian Road South
Suzhou Industrial Park
Jiangsu, 215024
People's Republic of China
Tel: +86 512 6283 7080
Fax: +86 512 6283 7087
tness@gsig.com

GSI Group Japan Corporation
Westwind Air Bearings Division
Shuuwa Shiba Park Building 6F
2-4-1 Shiba-koen, Minato-ku
Tokyo 105-000
Japan
Tel: +81 3 5714 0594
Fax: +81 3 5714 0595
infojp@westwind-airbearings.com

Westwind Air Bearings
(Taiwan Sales & Support)
4F., No.80, Baoqing Rd
Taoyuan City
Taoyuan County 330
Taiwan R.O.C.
Tel: +886 3 302 2366
Fax: +886 3 302 1141
tko@gsig.com

